

Figure 1: We have isolated the radial velocity of the host star due to the candidate planet. Data begins at UTC 2083-07-22/05:37. Positive values indicate the velocity at which the star is moving towards us; negative indicate the velocity at which it is moving away.

**Atmospheric composition of the candidate planet (percent by volume)**

Molecule	Concentration
$N_2$	51.6
$CO$	3.38
$CO_2$	3.7
$SiH_4$	18.7
$H_2S$	22.6

### Gas Abundance (percent by volume)

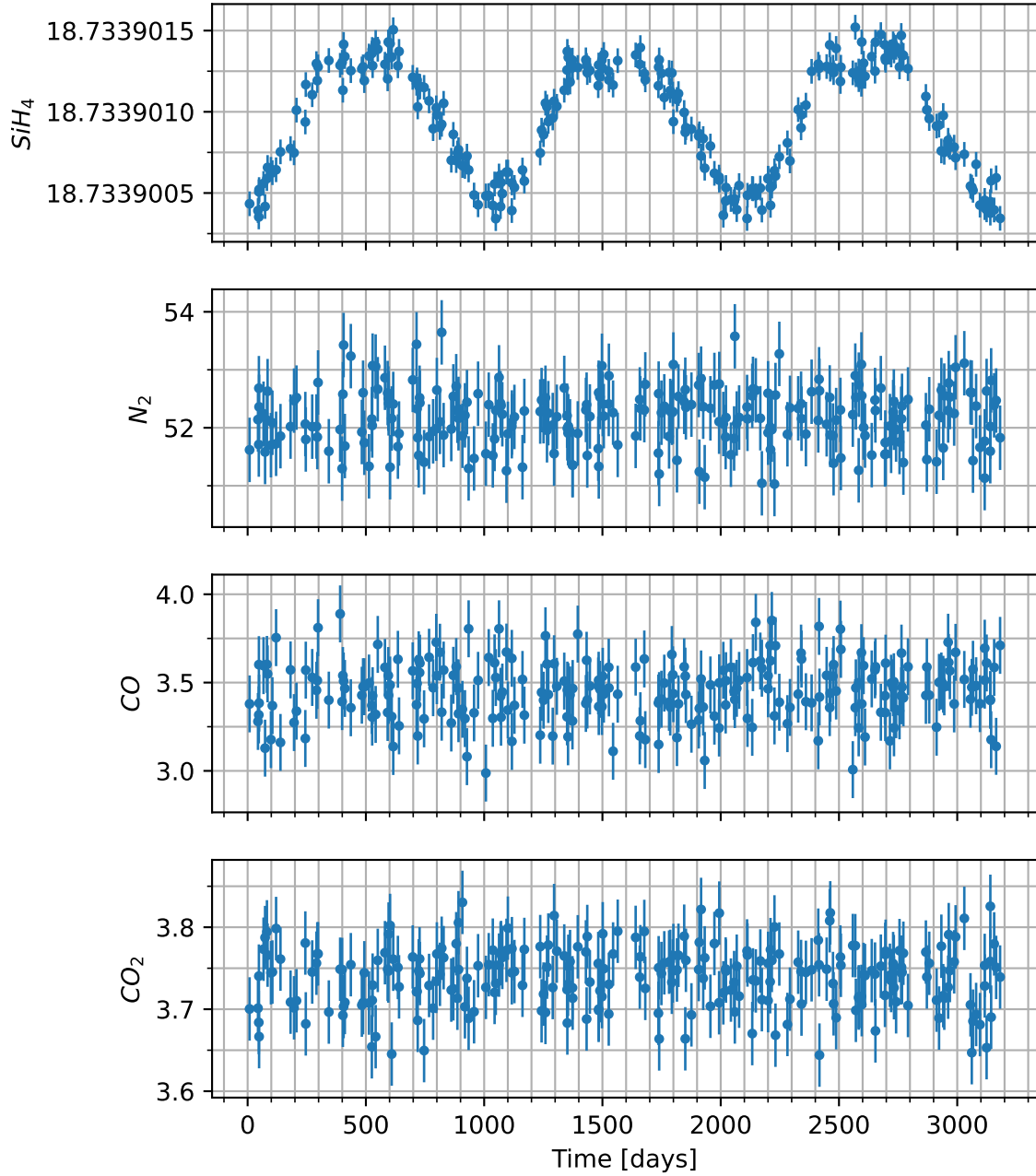


Figure 2: Concentration of various gases in the atmosphere of the candidate planet versus time. Note that the y-axis will usually only show the variation multiplied by some factor, shown in the upper left, and then added to some normal amount, also in the upper-left.

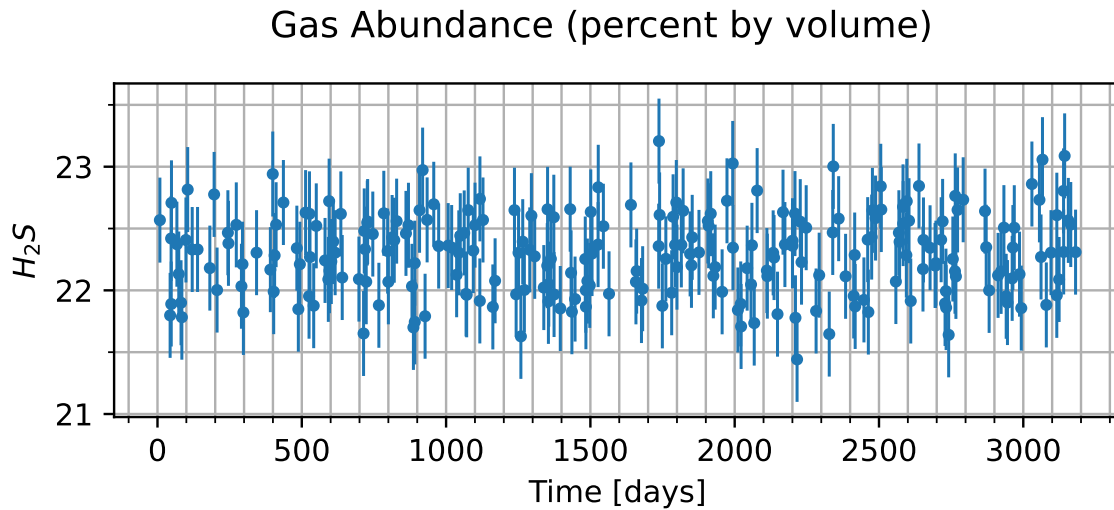


Figure 3: Concentration of various additional gases in the atmosphere of the candidate planet versus time. Note that the y-axis will usually only show the variation multiplied by some factor, shown in the upper left, and then added to some normal amount, also in the upper-left.

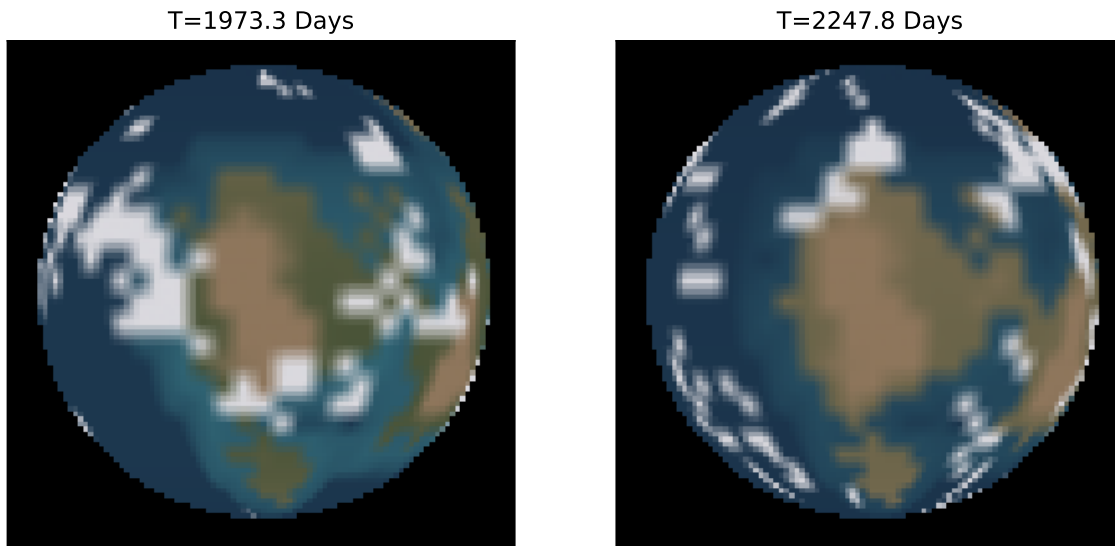


Figure 4: Maps of the surface of the candidate planet taken at two different times. Times are indicated above each image relative to the times shown in the radial velocity curve. Those maps are shown here. Tan areas indicate what we believe to be land, while blue-ish areas indicate what we believe to be liquid regions of some kind. Other colors present reflect the visible color as best as we are able to measure.